



A Family Guide & Community Resources

Durkin Administration Building
20 Irving Street
Worcester, MA 01609
508-799-3499

Parent Information Center
768 Main Street
Worcester, MA 01608
508-799-3194



Table of Contents

Table of Contents.....	2
Worcester Public Schools Compact.....	3
Letter to Families.....	4
School Registration begins at the Parent Information Center.....	5
Which School Should My Child Attend? - Quadrant Map.....	6
High Schools.....	7
Middle Schools.....	8
Elementary Schools.....	9
Early Education Programs.....	10
Worcester Child Development Head Start Program.....	11
Head Start Family Income Guidelines.....	12
WPS General Registration Grades K - 12.....	13
Volunteer Transfer Policy & Hardship Appeal Process.....	14
Transportation/Attendance Policy/Early Dismissals/Cancellations.....	15
Programs for English Language Learners.....	16
Student Support Services and Intervention Services.....	17-18
School Based Health Centers.....	19
Special Education.....	19
Bullying Prevention and Intervention Plan.....	20
How to Address Needs at Your Child's School.....	21
Worcester School Committee.....	22
Family Involvement and Engagement.....	23
Community Liaison & Advocates.....	24-26
After School Programs.....	26-27
School Calendar 2011-2012.....	28
Special Thanks.....	29

Note: Information contained in this guide is subject to change for the coming school year.
More information including School Profiles can be found at each school's website.



THE WPS COMPACT

Superintendent Melinda J. Boone, Ed.D

Delivering on High Expectations and Outstanding Results for All Students

100 percent of students will be guaranteed a rigorous core curriculum resulting in measurable gains in student learning

By 2012

- 80 percent of students proficient in READING by Grade 3
- 80 percent of students proficient in MATH by Grade 3

- 80 percent of students proficient in ELA by Grade 8
- 80 percent of students proficient in MATH by Grade 8

For the class of 2013

100 percent of graduates will successfully complete high school coursework that prepares them for both college and career

WPS STRATEGIC GOALS

1. Worcester Public Schools will implement strategies that result in high student achievement.
2. Worcester Public Schools will develop and maintain welcoming, safe and secure schools.
3. Worcester Public Schools will foster high levels of family and community engagement, commitment and partnership.
4. Worcester Public Schools will develop a formal communication system in order to better transfer information on effective practices and needs.



February 2011

Dear Families,

This guide was created by Families, Worcester Public Schools and Community Agencies for families who are learning about the Worcester Public Schools System. Families often don't comprehend how the school system works and desire to have a better understanding. Primarily, the handbook is the most complete resource for the district. Learning about the various programs, services and agencies within a school district can be overwhelming. Our goal is to empower families to become more knowledgeable and thus be involved in their child's education. Research has shown that involved families ensure greater success in their child's education.

You, as a parent have options within Worcester Public Schools. Your involvement can make a difference. We believe greater communication among families, students, teachers, administrators and community partners working together to achieve a common purpose.

Delivering on High Expectations and Outstanding Results for All Students

We are pleased to provide the Family Guide as a supplement to the Policies Handbook to learn about the various schools, programs and community organizations that are available to help support your child's education and family needs. Additional details about each school can be found at each school's website.

For your convenience this guide is available on our website at: <http://www.worcesterschools.org> and at the Parent Information Center, 768 Main Street, Worcester, MA 01608.

Sincerely,

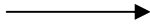


Worcester Public Schools
Worcester Community Organizations



Information and Registration Starts at the Parent Information Center

START HERE



**Worcester Public Schools
Parent Information Center**
768 Main Street
Worcester, MA 01608
(508) 799-3194

**Open year round weekdays from
7:30 a.m. to 4:00 p.m.
Evening Appointments Available
By prior arrangement**

Information and assistance

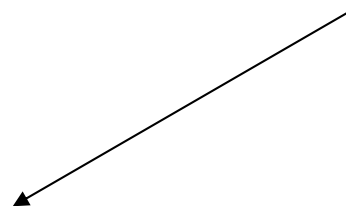
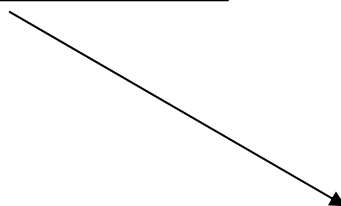
Then Proceed To



Head Start
Federally funded
Program
Register your child at
the Head Start Office
770 Main Street
Worcester, MA 01608
(508) 799-3608

**Pre-School to
6th Grade**
Register your child at
the
Parent Information
Center

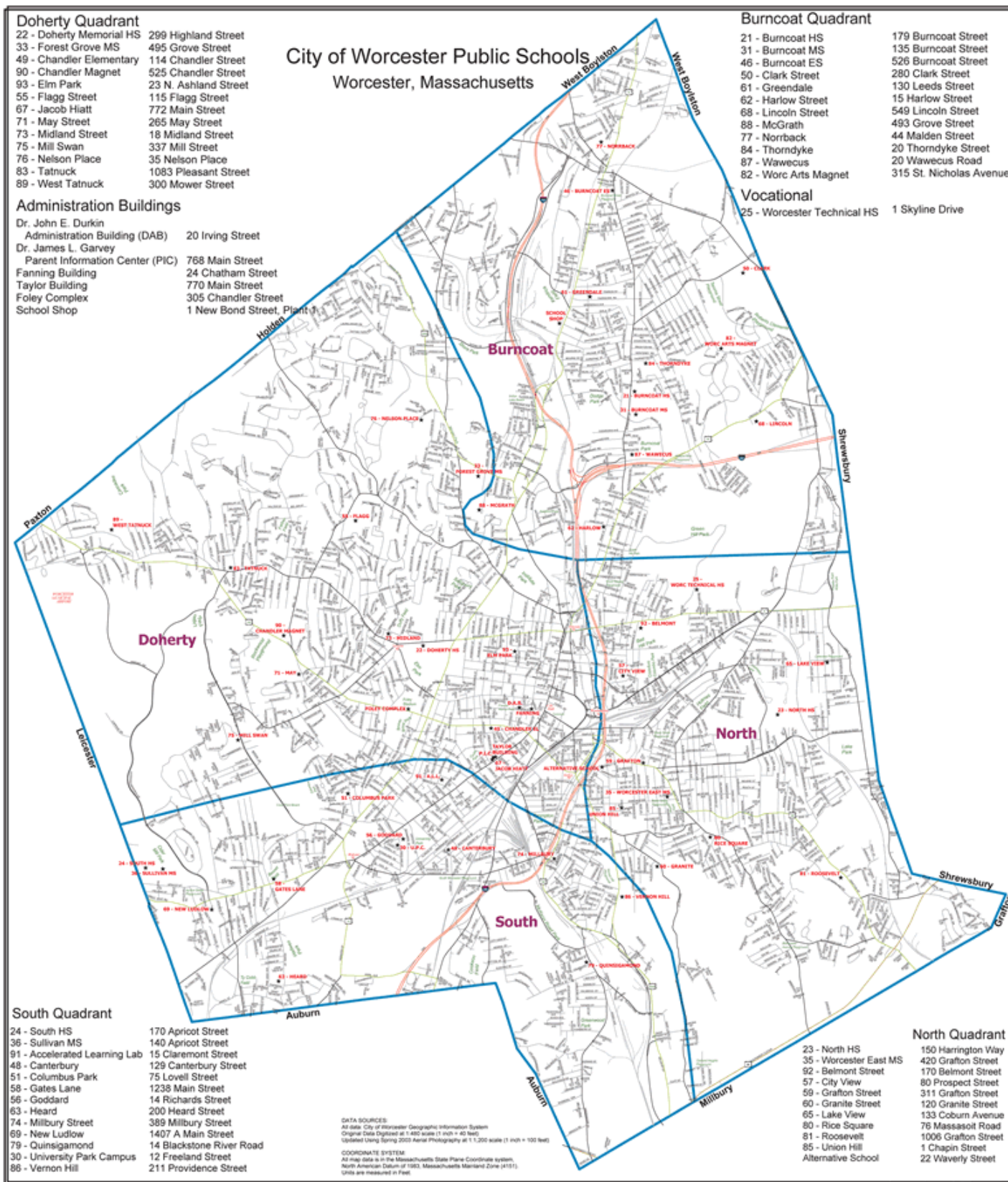
**Middle and High
Schools**
Register your child at
the Parent
Information Center
Except: University Park
Campus and Worcester
Technical High School



Find Your Quadrant in the Map.
(See the next page.)



Which School Should My Child Attend?



This map can be found at <http://pic.worcesterschools.org> with ability to zoom in.



High Schools

Register at the Parent Information Center – except University Park Campus & Worcester Technical

* City-Wide Magnet School – Any student may attend

** Quadrant Magnet School – Student must live in that Quadrant of the City to attend.

*** Innovation School

North Quadrant

[North High](#)

Grades 9-12
Principal: Matthew Morse
140 Harrington Way
01604
508-799-3370

[Worcester Technical High School](#)

Accepts Students from all quadrants
Principal: Sheila Harrity
1 Skyline Drive
01605
508-799-1940

South Quadrant

[South High](#)

Grades 9-12
Principal: Maureen Binienda
170 Apricot St.
01603
508-799-3325

[Claremont Academy](#)

Grades 7 -12
Principal: Paula Severin
15 Claremont St.
01610
508-799-3077

[University Park Campus](#)

Grades 7 - 12
Principal: Ricci Hall
12 Freeland St.
01603
508-799-3591

A small school working in partnership with Clark University. Enrollment is based on specific geographic location guidelines. For admission register at University Park.

Doherty Quadrant

[Doherty High](#)

Grades 9-12
Principal: Sally Maloney
299 Highland Street
01602
508-799-3270

Burncoat Quadrant

[Burncoat High](#)

Grades 9-12
Principal: William Foley
179 Burncoat St.
01606
508-799-3300

Note: Please confirm Quadrant designation at the Parent Information Center (508) 799-3194



Middle Schools

Register at the School if attending University Park Campus

* City - Wide Magnet School

** Quadrant Magnet School

*** Innovation School

North Quadrant

[Worcester East Middle](#)

Grades 7 – 8
Principal: Rose Dawkins
420 Grafton St.
01604
508-799-3478

South Quadrant

[Claremont Academy](#)

Grades 7-12th
Principal: Paula Gibb-Severin
15 Claremont Street
01610
508-799-3077

[Sullivan Middle](#) ***

Grades 7 - 8
Small Learning Communities
Principal: Jason DeFalco
140 Apricot Street
01603
508-799-3350

[University Park Campus](#) ***

Grades 7 - 12
Principal: Ricci Hall
12 Freeland St.
01603
508-799-3591

A small school working in partnership with Clark University. Enrollment is based on specific geographic location guidelines. For admission register at University Park.

Doherty Quadrant

[Forest Grove Middle](#)

Grades 7 - 8
Principal: Mark Williams
495 Grove Street
01605
508-799-3420

Burncoat Quadrant

[Burncoat Middle](#)

Grades 7 - 8
Principal: Lisa Houlihan
135 Burncoat Street
01606
508-799-3390



Elementary Schools

Register at Parent Information Center for ALL Elementary Schools

* City - Wide Magnet School ** Quadrant Magnet School ***Innovation School

North Quadrant

Belmont Street

Principal: Dr. Susan Proulx
170 Belmont Street
01605
508-799-3588

City View Discovery*

Principal: Albert Ganem, Jr.
80 Prospect Street
01605
508-799-3670

Grafton Street

Principal: Mary McKiernan
311 Grafton Street
01604
508-799-3477

Lake View

Principal: Margaret Bondar
133 Coburn Avenue
01604
508-799-3536

Rice Square

Principal: Kathleen Valeri
76 Massasoit Road
01604
508-799-3556

Roosevelt**

Principal: Ellen Kelly
1006 Grafton Street
01604
508-799-3482

Union Hill

Principal: Marie Morse
1 Chapin Street
01604
508-799- 3600

South Quadrant

Canterbury Street Magnet Computer-Based

Principal: Elizabeth Army
129 Canterbury Street
01603
508-799-3484

Columbus Park Preparatory Academy

Principal: Jessica Boss
75 Lovell Street
01603
508-799-3490

Gates Lane School of International Studies

Principal: Amy Swenson
1238 Main Street
01603
508-799-3488

Goddard School of Science and Technology

*, ***
Principal: Marion Guerra
14 Richards Street
01603
508-799-3594

Heard Street Discovery Academy

Principal: Thomas Brindisi
100 Heard Street
01603
508-799-3525

Quinsigamond School

Principal: Debbie Mitchell
14 Blackstone River Road
01607
508-799-3502

Vernon Hill

Principal: Irene Logan
211 Providence Street
01607
508-799-3630

Woodland Academy***

Principal: Patricia Padilla
93 Woodland Street
01610
508-799-3557

Doherty Quadrant

Chandler Elementary

Principal: June E. Eressy
114 Chandler Street
01609
508-799-3572

Chandler Magnet*,***

Principal: Ivonne Perez
525 Chandler Street
01609
508-799-3452

Elm Park Community

Principal: Paula Proctor
23 North Ashland Street
01609
508-799-3568

Flagg Street

Principal: Dr. Sheila Graham
115 Flagg Street
01602
508-799-3522

Jacob Hiatt*

Principal: Patricia Gaudette
772 Main Street
01610
508-799-3601

May Street

Principal: Luke Robert
265 May Street
01602
508-799-3520

Midland Street

Principal: Michele Lodowsky
18 Midland Street
01602
508-799-3548

Nelson Place

Principal: Malachi Kelley
35 Nelson Place
01605
508-799-3506

Tatnuck Magnet

Principal: Thomas Pappas
1083 Pleasant Street
01602
508-799-3554

West Tatnuck

Principal: Steven Soldi
300 Mower Street 01602
508-799-3596

Burncoat Quadrant

Burncoat St. Prep.

Principal: Debra Frank
562 Burncoat Street
01606
508-799-3537

Clark Street Developmental Learning

Principal: Patricia McCullough
280 Clark Street
01606
508-799-3545

Lincoln Street

Principal: Mary Beth Pulsifier
549 Lincoln Street
01605
508-799-3504

Francis J. McGrath

Principal: Nancy Dahlstrom
493 Grove Street
01605
508-799-3584

Norrback Avenue*

Principal: Karrie Allen
44 Malden Street
01606
508-799-3500

Thorndyke Road

Principal: Margaret Doyle
30 Thorndyke Street
01606
508-799-3550

Worcester Arts Magnet*

Principal: Dr. Susan O'Neil
315 St. Nicholas Ave.
01606
508-799-3575

Wawecus Road

Principal: Joanna Loftus
20 Wawecus Road
01605
508-799-3027



Early Education Programs (2011 – 2012 School Year)

Worcester Public Schools - Preschool Program (Half-Day – ONLY)

<http://early-childhood.worcesterschools.org>

Registration at: 768 Main Street – Parent Information Center

North Quadrant	South Quadrant	Doherty Quadrant	Burncoat Quadrant
<ul style="list-style-type: none">Belmont Street CommunityCity View DiscoveryGrafton StreetRooseveltUnion HillWorcester Tech	<ul style="list-style-type: none">Canterbury StreetColumbus ParkGates LaneGoddardQuinsigamond CommunityVernon HillWoodland Academy (Full-Day Only)	<ul style="list-style-type: none">Chandler MagnetElm Park CommunityJacob Hiatt MagnetNelson PlaceWest Tatnuck	<ul style="list-style-type: none">Clark Street Developmental LearningLincoln StreetMcGrath ElementaryNorrback AvenueWorcester Arts Magnet School

Note: School Locations are subject to change.

Register at the Parent Information Center (<http://pic.worcesterschools.org>)

- Preschool is available for children who will be 4 years old by December 31st.
- A half-day center-based program operates Monday-Friday - 2^{1/2} Hours per day
- The program offers both morning and afternoon sessions (please see school schedule)
- Transportation is not available. (Some exceptions are made for children who have a disability).
- All children must be residents of Worcester. Proof is required.
- WPS Pre-School Program follows the Worcester Public School calendar.
- Applications are available beginning in January. Lottery takes place in the Spring,
- However applications are accepted throughout the school year.
- Applications are available at the Parent Information Center. (508) 799-3194



Worcester Child Development Head Start Program - Based on eligibility

770 Main Street – Administration Building – Worcester, MA

<http://www.headstart.worcesterschools.org>

Head Start is a federally funded pre-school program that provides comprehensive services to both children and their families. Services include: Pre-School Education, Social Services/Health Dental/Nutrition, Special Needs, and Family Involvement. NAEYC Accredited Program

Families are eligible if:

- The family lives in Worcester
- Has a Child 3 or 4 years old (Priority is given to 4 year old children)
- The family income falls within the guidelines established by the federal government. (See current table below for state guidelines ie: a family of four can make no more than \$22,050.00 per year) Documentation is required
- Children with Special Needs receive special consideration

Program options are as follows:

Center Based Partial Day

- No Fee
- Head Start classrooms that operate 5 days a week from 9:00 AM – 12:30 PM
- Limited Transportation is available to families who meet eligibility criteria

Center Based Full Day

- Minimal Fee based on family income
- Head Start classrooms that operate 5 days a week for families that are working in school or job training available up to full day. (Documentation is required in order for a child to be placed in a full day classroom.)
- Own transportation is required.

For more information please call the WPS Head Start Program Administrative office located at:

770 Main Street, Worcester, MA – (by the WPS Parent Information Center)

508-799-3608 or 508-799-3254

Open Monday through Friday 8:30am – 4:30pm.

Bilingual staff available.

Worcester Child Development Head Start Program Locations

North Quadrant

South Quadrant

Doherty Quadrant

Burncoat Quadrant

Millbury Street
389 Millbury Street

Vernon Hill School
211 Providence St.

**Mill Swan
Communications Center**
337 Mill Street

Greendale School
133 Leeds Street



Head Start Family Income Guidelines

2011 HHS Poverty Guidelines for the 48 Contiguous States and the District of Columbia

Persons in family	Poverty guideline
1.....	\$10,890
2.....	14,710
3.....	18,530
4.....	22,350
5.....	26,170
6.....	29,990
7.....	33,310
8.....	37,630

For families with more than 8 persons, add \$3,820 for each additional person.

WPS General Registration

Preschool, Kindergarten and Grades 1 to 12

(except for University Park Campus and Worcester Technical High)

All registrations for: new students, returning students, transfers and change of addresses take place at the **Parent Information Center, 768 Main Street, Worcester, MA**

Phone (508) 799-3194, Website: <http://pic.worcesterschools.org>

Hours: Monday – Friday, 7:30 am – 4:00 pm

- Registration for the next school year begins in January.
- Parents will receive notification by mail to the school where their child has been accepted.
- Half - day Pre-School Programs are available at Pre-School Centers
- Kindergarten programs are full - day in all Worcester Public Elementary Schools.
- To be eligible to attend kindergarten a child must be five years old by December 31st.
- School hours vary visit website <http://www.worcesterschools.org> or see school schedule for hours
- All new Parents/Guardians must provide:
 1. Proof of Worcester residency - current utility bill, recent mail - or student proof of address verification form for those who are sharing housing or in a temporary shelter.
 2. Proof of child's date of birth - Official Birth Certificate
 3. Proof of Legal Guardianship - Court mandated document
 4. Updated Immunization Record at time of enrollment
 5. A Physical exam is required by the state for all 1st time registrant's if entering Pre-K, K, 4th, 7th or 9th grade.

If parents do not have student's records at the time of registration a Release Form must be signed by the parent for the student records to be released from their school. A staff member will contact the "home" school to request all relevant records and to ensure that the school and receives them within 2 days. No student will be exempt from attending school for more than 2 days from the date of the enrollment process.

Neighborhood District Schools

Students are automatically enrolled in their neighborhood elementary schools.

Quadrant and District Magnet Schools

The Worcester Public Schools has a Voluntary Transfer Policy, which allows you to enroll your child in a school outside of your neighborhood district school. Worcester Public Schools has a number of Quadrant Magnets Schools that your child may attend. Criteria for attendance to magnet schools are based on a lottery. Each magnet school focuses on specialized areas of learning. Please visit school website for information.

Middle School and High School:

Students registering for grades 7-12 must be accompanied by a parent or legal guardian.

Registrations are accepted at the Parent Information Center - 768 Main Street, Worcester.

Students registering for Worcester Technical High School or University Park Campus must register at the school's campus.

Parents/Guardians must provide:

1. Proof of Worcester residency – current utility bill, lease, recent mail – or student proof of address verification form for those who are sharing housing or in a temporary shelter.
2. Proof of child's date of birth – Official Birth Certificate
3. Proof of legal guardianship – court mandated document
4. Updated Immunization Record at time of enrollment
5. A physical exam is required at time of registration for all 1st time registrant's if entering 7th or 9th grade. All Students are required to present an annual physical.



Voluntary Transfer Policy

After October 1st all transfer requests should be made at the child/student's school through the principal.

Procedures for Applying for a "Voluntary Transfer"

- a. Applications and a policy statement are available at the Parent Information Center or the Quadrant Manager's Office.
Applications for Worcester Technical High School may be obtained in all secondary guidance offices or at the Technical School Admissions Office.
- b. The application must be filled out and returned to the appropriate office.
Elementary (K-6) Parent Information Center
Secondary (7-12) Communication and School Support Coordinator in the Quadrant Office.
- c. A written approval or denial will be sent to the home of the parent/guardian and copies will be forwarded to the principals of both the sending and receiving schools.
- d. A copy of the application and the approval or denial letter will be kept on file in the Quadrant Office.

All of the same documents required for registration are required in addition to:

- Student Records from previous school:
- A Transfer Form
- Transcripts
- Discipline Record
- Last Report Card

If parents have student's previous school records with them – students will be enrolled immediately once Guidance Counselor has determined their class schedule.

Please note: **Transportation to 'new school' must be provided by parent/guardian.**

Hardship Appeals Process

If the parent/guardian disagrees with the quadrant manager's decision, a maximum of two weeks will be allowed to appeal the decision in writing to the Chairperson of the Hardship Appeals Board:

Robert Vartanian - School Choice Coordinator
768 Main Street, Worcester, MA 01610
508-799-3450

The Board will review each case referred and make timely decisions relative to the disposition of the appeal. A copy of the decision will be sent to the parent/guardian and the appropriate Quadrant Manager. **NOTE:** No hardship appeals are accepted after October 1st of each year.



Transportation

Worcester Public School's Transportation Office can be reached at 799-3152.

For additional information about WP Schools transportation policies and services, see handbook including safety and behavior rules.

Bus routes are listed on our website: <http://www.worcesterschools.org>

Transportation is granted to students in grades K through 12 who reside two (2) miles or more from the school to which they are entitled to attend.

The Worcester Public Schools has the right to remove busing privileges to any student not adhering to the conduct policy.

Attendance Policy

For additional information, refer to Handbook distributed to parents at the start of the school year. Check your school for changes.

Elementary Level: K-6

- 14 or more absences per year will be considered excessive and may result in retention (child may need to attend summer school to avoid retention).
- Parents should report absences by telephone or by writing note.

Middle and High School: Grades 7-12

- Students will not receive credit for a class in which he/she has more than 14 absences.
- After 5 absences in grades 7-8, the principal/designee will contact the parent or guardian in writing and may request a meeting to discuss absences.
- A student who misses less than ½ of a class period will be considered dismissed. A student who is absent for more than ½ of the class will be considered absent from that class.
- 4 Unexcused tardy' to a class in any semester will equal 1 absence for that class.

Dismissals / School Cancellations

When schools are dismissed early, all after school and evening programs are cancelled. For general information on Delayed school days, Early Dismissals and Cancellation Policy, see the handbook for details.



School cancellations or delays will be announced on our website at www.worcesterschools.org and at the following radio and TV stations.

Radio Stations

WTAG 580 AM
WXLO 104.5 FM

WORC 1310 AM – (broadcasts in Spanish between 5am – 6am
Sintonize entre las 5am y las 6am para informes en Español)

WCUW 93.1 FM
WSRS 96.1 FM
WBZ 1030 AM
WCRN 830 AM

TV Stations

WHDH TV Channel 7
WCVB TV Channel 5
WBZ TV Channel 4
WFXT Channel 25



Programs for English Language Learners

When registering your child at the Parent Information Center, your child will be tested for his/her English Language Proficiency. If your child is eligible for English Language Learning Services your child's school options will be explained to you by one of our assessors. Please keep in mind that not all schools have ELL Programs Services for English Language Learners and are offered only in certain schools. If you choose to have your child receive these services, they may be attending a school outside of their neighborhood. **Transportation to those schools will be provided.**

Transitional Bilingual Education Services in Spanish

Two-Way Program – Levels K, 1, 2 are offered at the following Elementary Schools:

- Norrback Avenue
- Roosevelt Elementary

The Language Acquisition Program offered at these schools is for students whose parents are interested in having their children develop Bi-Lingual Language skills for English and Spanish. English speaking students and Spanish speaking students are placed in the same class room and are taught their subjects in both languages throughout the day.

Transitional Bilingual Education Program for Spanish is available at:

- Chandler Magnet Elementary School: Grades 1-6

Students in grades 1 through 6 are assessed to determine if they are in need of English Language services. Should your child need these services, he/she will be assigned to a school that provides them. This program is designed for Spanish speakers that are new to the country. In this program students are taught literacy skills in Spanish, while also developing language skills in English.

Transitional Bilingual Education Programs for Spanish speakers are available at:

- Secondary Schools: Grade Level 7-12

Burncoat High

Forest Grove Middle

Sullivan Middle

Burncoat Middle

North High

Worcester East Middle

Doherty High

South High

Students enrolled in secondary schools take the majority of their classes in English. However, depending on their language proficiency, additional support will be provided.

For more information about services for English Language Learners, or to appeal a decision made about your child's language service assignment, please call the English Language Learners Dept. 508-799-3098 or 508-799-3198. <http://ell-support.worcesterschools.org>



Student Support Services and Intervention Services

21st Century Schools

21st Century Community Learning Centers Grant promote efficient use of public resources and facilities through effective partnerships between schools, community-based agencies, and other public and private entities. The goals of the program are to contribute to and improve student learning, create stronger families, and build healthy communities. The out-of-school time programs offer standards-based projects, homework centers, computer technology, literacy activities, recreation, arts, health education, and numerous other related opportunities that align with the Massachusetts frameworks. Fifteen elementary schools and five middle schools are designated 21st Century Community Learning Centers.

Contact: Barbara Sargent, Director of Supplemental Academic Programs and Services
Phone: 508-799-3655 SargentB@worc.k12.ma.us

Adult Learning Center – Consider resuming your education. The adult learning center is there to help with English proficiency, GED preparation and basic literacy. We are one of the largest official GED Testing Centers in Central Massachusetts.

508-799-3091 <http://adult-education.worcesterschools.org>

AVID - Advancement Via Individual Determination

AVID is a seventh through twelfth grade system to prepare students in the academic middle for four-year college eligibility. These are students who are capable of completing a college preparatory curriculum but are in need of support as they tackle the most rigorous classes that will guide them to a successful college career and beyond. The main components of AVID are academic instruction, tutorial support, organizational skills and a focus on higher order thinking skills.

<http://avid.worcesterschools.org>

Child Study - Academic, Social and Emotional Support

Talk to your child's teacher and/or principal and get a referral to the school counselor/adjustment counselor in the building if your child has social, emotional, behavioral and/or academic concerns. Each school has a Student Support Process (SSP). Consultations/ assessment services are available for your child or referrals to community-based providers. School staff members, often including support staff will meet with parents and teachers to share ideas and strategies to address issues. Your child may not only receive school based support but there are a variety of community-based services to draw from to help families address the various needs of their children and families.

Contact: Judy Thompson, Coordinator of Counseling, Psychology and Community Outreach Services, 508-799-3175

Nursing Staff

Every school has a full or part time school nurse. Worcester Public School Nurses are registered nurses who have the professional education and expertise to function in the complex systems of education and health. Contact them directly to discuss medical concerns regarding your child.

Contact: Donna Hoey, Coordinator of School Nurses 508-799-8553

<http://nursing.worcesterschools.org>



Supplemental Educational Services (SES), a component of Title One funding, provides tutoring, homework assistance and other academic programs outside the regular school day. The added help may be given before, after school, weekends, or during summer. Your child may qualify if he or she is:

- eligible for free or reduced-price lunch,
- enrolled in a Title I school, and
- the school has not made AYP (Adequate Yearly Progress) for two years or longer

Contact: Barbara Sargent, Director of Supplemental Academic Programs and Services
Phone: 508-799-3655 SargentB@worc.k12.ma.us

Supporting Homeless Students

Under the McKinney-Vento Homeless Assistance Act (Subtitle B) students who reside in a situation that fits the legal definition of "homeless" may qualify for certain supports, services and exemptions from the usual enrollment requirements. When a family is enrolling a student or students in school or changing an address, but is unable to provide the usual form of address verification, or is sharing housing with others or is temporarily sheltered in some other alternative arrangement, the family will be asked to verify the current living situation on the Student Address Verification Form. Transportation to support continuous enrollment in school maybe arranged as feasible.

Contact: Judy Thompson, serves as the McKinney-Vento Homeless Liaison and Carol Baez is the Foster and Homeless Student Resource Specialist. They can be reached at 508-799-3175

Support for Foster Parents, Foster Children, Pre-Adoptive and Adopted Children and Families.

Specialized case management services are provided to students who are in foster care and those who are homeless. One School Adjustment Counselor and a Resource Specialist, under the direction of the Child Study Department, work to increase understanding and awareness of the academic, psychological and social development needs of foster, adopted, homeless and other children at risk in the Worcester Public Schools. In addition, they provide support and intervention to foster parents and their children. They facilitate communication between the many providers, teachers and organize transportation as needed.

Contacts: Ina Perez, School Adjustment Counselor **or** Carol Baez, Foster & Homeless Resource Specialist. Phone: 508-799-3394

Title I Purpose and Overview

The No Child Left Behind legislation provides funding through various entitlement grants, one of the largest being the Title One grant.

Title I targets resources to the districts and schools with high percentages of students from low-income families. This grant funding may be used to support additional instructional staff, professional development, extended-time programs, and other approaches to help ensure that all students have the opportunity to obtain a high-quality education and reach proficiency on challenging state academic standards and assessments.

Contact: Barbara Sargent, Director of Supplemental Academic Programs and Services
Phone: 508-799-3655 SargentB@worc.k12.ma.us



School-Based Health Centers

The Worcester Public Schools partners with two health providers to operate **School Based Health Centers** serving 13 of our schools. Health Centers are staffed by agency personnel as well as a WPS School Nurse and School Adjustment Counselor. The School-Based Health Centers provide students with necessary health care including physicals for school, work, or sports, treatment of illness, first aid, emergency care immunization and/or health education. **In order to receive services from the partner health agency at the school, parents guardians, must complete and return to school a signed enrollment form.** When appropriate, health insurance companies of the families will be billed. No one will be denied services if unable to pay.

SCHOOL-BASED HEALTH CARE PROVIDERS:

School	Health Agency Partner
Burncoat High/Burncoat Middle Schools	Edward M Kennedy Health Center
Claremont Academy/Woodland Academy	Family Health Center
Doherty High School	Family Health Center
Elm Park Community School	Family Health Center
Goddard School of Science and Tech.	Family Health Center
North High School	Edward M Kennedy Health Center
Roosevelt Elementary School	Edward M Kennedy Health Center
South High Community School	Family Health Center
Sullivan Middle School	Family Health Center
University Park Campus School	Family Health Center
Worcester Technical High School	Edward M Kennedy Health Center

Agency Locations:

Family Health Center - 26 Queen Street Worcester, MA (508) 860-7700

Edward M Kennedy Health Center -19 Tacoma Street, Worcester, MA (508) 852-1805

Students With Disabilities

If you believe that your child has a disability and may need certain accommodations or supports in order to be successful in school please speak to the principal about whether a 504 plan should be developed.

Special Education Services

<http://special-education.worcesterschools.org>

Special education services are specifically designed instruction and/or related services that meet the unique educational needs of an identified student with disabilities. These services provide support to students with disabilities to access the general curriculum so that the student can successfully develop their individual educational potential. If you are concerned that your child has a disability and it is affecting his/her ability to make progress in school, you may contact your child's teacher or principal to inquire about additional supports or a referral for special education evaluation.

NOTE: A Student Support Process Meeting (SSP) (see section below) is recommended before any referral to Special Education. Many times the issues of concern can be addressed more quickly and appropriately through the SSP. See Policy Handbook for more details.

Contact:

Dr. Marco Rodrigues, Manager of the Special Education Department – (508) 799-3093

Mrs. Midge Wetzel, Assistant Director, Special Education Department – (508) 799-3042



Bullying Prevention and Intervention Plan

Bullying Prevention Website: www.preventbullying.worcesterschools.org
Dedicated Email Address: reportbullying@worc.k12.ma.us
Anonymous/Bullying Reporting Phone Line: 508-799-3472.



Worcester Public Schools

Worcester, Massachusetts



Office of the Superintendent
Melinda J. Boone, Ed.D.
Superintendent

Dr. John E. Durkin Administration Building
20 Irving Street
Worcester, Massachusetts 01609-2493

Tel. (508) 799-3115
FAX (508) 799-3119
boone@worc.k12.ma.us

January 2011

Dear Families,

As you are aware, on May 4, 2010 Governor Deval Patrick signed into law *"An Act Relative to Bullying In Schools"*. As a result of this new law, each school district in the Commonwealth is required to develop and implement a Bullying Prevention and Intervention Plan. On December 16, 2010 the Worcester School Committee approved the district plan, and subsequently submitted it to the Massachusetts Department of Elementary and Secondary Education.

The Worcester Public Schools Bullying Prevention and Intervention Plan is a comprehensive approach to addressing bullying and cyber-bullying. The Worcester Public Schools are committed to working with students, staff, families, law enforcement agencies, and the community to prevent issues of violence. In consultation with these constituencies, we have established this plan for preventing, intervening, and responding to incidents of bullying, cyber-bullying and retaliation. The district takes seriously its responsibility for the implementation of the plan to ensure that students are safeguarded from bullying.

The district is committed to providing all students with a safe learning environment that is free from in-person bullying and cyber-bullying. This commitment is an integral part of our comprehensive efforts to promote learning, and to prevent and eliminate all forms of bullying and other harmful and disruptive behavior that can impede the learning process and outstanding results for all students.

Welcoming, safe and secure schools are core principles of the Worcester Public Schools. We have a strict Code of Conduct that includes anti-bullying expectations. We will not tolerate any unlawful or disruptive behavior, including any form of bullying, cyber-bullying or retaliation in the Worcester Public Schools buildings, on school grounds, or in school-related activities. We will investigate all reports and complaints of bullying, cyber-bullying, and retaliation and take immediate action to end bullying behavior and restore the target's sense of safety. We will support this commitment in all aspects of our school community, the curriculum, instructional programs, staff development, extracurricular activities and engage parents/guardians to support bullying prevention.

In closing, for additional information and to access the district plan and incident reporting form, visit www.preventbullying.worcesterschools.org or you may email at reportbullying@worc.k12.ma.us or call 508-799-3472.

Best Regards,

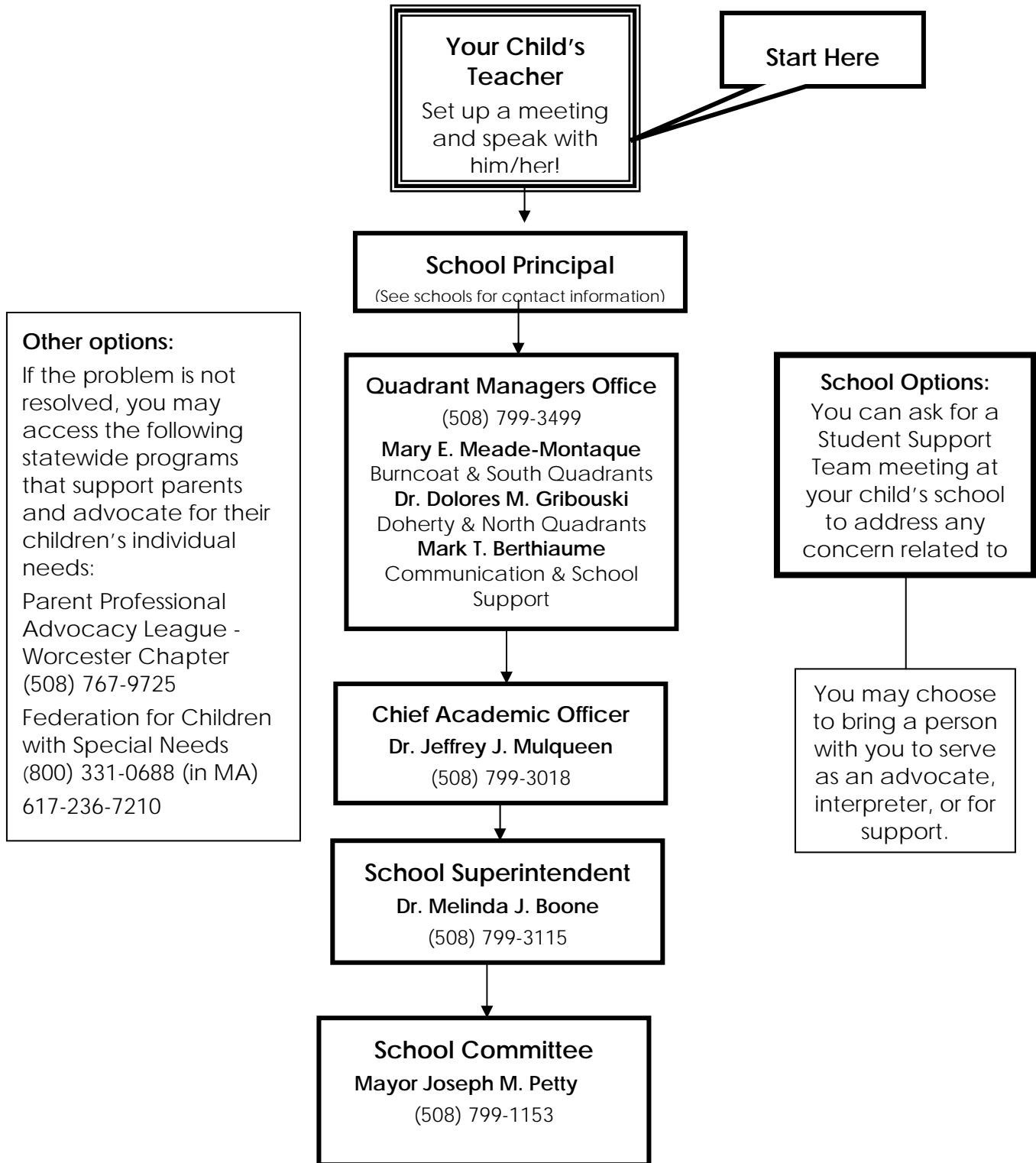
A handwritten signature in cursive script that reads "Melinda J. Boone".

Melinda J. Boone, Ed.D.
Superintendent



How to Address Needs at Your Child's School

Follow the process outlined by the Worcester Public Schools, proceeding to the next step if the situation is not resolved:



Worcester School Committee

<http://school-committee.worcesterschools.org>

All meetings are open to the public and held the first and third Thursday of the month at 7pm in the City Council Chamber at Worcester City Hall. Parents can petition the School Committee with concerns they may have by contacting: Dr. Helen A. Friel at (508) 799-3032.

Meeting times vary in June, July and August please call Superintendent and Clerk of the School Committee Dr. Helen Friel for times and dates.

Mayor Joseph M. Petty	Chairman, School Committee	(508) 799-1153
Dianna L. Biancheria	School Committee Member	(508) 753-3440
Donna Colorio	School Committee Member	(774) 242-0092
John L. Foley	School Committee Member	(508) 853-3593
John Monfredo	School Committee Member	(508) 853-3444
Tracy O'Connell Novick	School Committee Member	(508) 410-3223
Brian A. O'Connell, Esquire	School Committee Member	(508) 792-6789

School Committee

You can access this governing body by visiting the website:

<http://school-committee.worcesterschools.org>.

508-799-3032

Meetings are conducted every 1st and 3rd Thursday of the month and they are open to the public. If you wish to address educational issues or concerns please contact Helen Friel, Assistant to the Superintendent and Clerk of the School Committee



Family Involvement and Engagement

We welcome all families to:

- Attend School Activities!
- Participate in parent workshops and conferences!
- Become a Volunteer at your child's school
- Join parent/teacher/community groups such as:
 - **Parent – Teacher Organizations** - Many schools have active parent groups. Contact your school's principal to receive more information.
 - **School Site Councils** - an advisory group that collaborates and assists in school improvement planning.

School Site Council consists of:

- Parent/guardian (elected position)
- Teachers or other school staff (elected position)
- A student (grade 9-12)
- School Principal
- Community organizations/partners

Parents/guardians have:

- Opportunity to shape policy decisions
- Gain understanding of the schools improvement strategies
- Focus on the interest of the school and all its students

Volunteers – The Worcester Public Schools are fortunate to have individuals from all facets of the community involved with our students and provide a wide variety of volunteer services. Volunteering is the giving of your time and talent with no financial compensation expected. Research shows that when parents are actively involved with their child's' education there is a direct correlation to increased student achievement. Contact:

Paula Harrity

Coordinator of Volunteer Services

24 Chatham Street, Room 203

508-799-3030

harrity@worc.k12.ma.us

<http://volunteer-office.worcesterschools.org>



Community Liaisons & Advocates

You can participate in these community and parent/guardian groups Worcester where you can network with others, gain support and find out more about the school district.

Central Massachusetts Housing Alliance - Worcester Contact: 508-791-7265

<http://www.cmhaonline.org>

Citywide Parent Planning Advisory Council (CPPAC) is the parent advisory council to the Worcester Public Schools Administration and the School Committee, made up of parents, guardians who represent the school that their children attend. The council has two main goals:

- To create and maintain a means of communication among parents, teachers, administrators and the school committee
- To promote an environment of understanding and common purpose so that the best education may be offered to all children.

CPPAC meets the second Thursday of each month at 7pm at the Worcester Technical High School at One Skyline Drive. Meetings are open to the public. All parents are encouraged to participate.

Contact: Dawn Johnson (508) 791-9277. <http://cppac.worcesterschools.org/>

Community Build

CommunityBuild is a Collective of diverse, skilled consultants who work under the leadership of the organization's principal, Suzanne M. Buglione. Based in Worcester, CommunityBuild engages individuals from across Central Massachusetts, bringing racial/ethnic, linguistic and experiential diversity to the work.

57 Harrison Street, Worcester, MA 01604

Phone: 508-757- 6519

Suzanne M. Buglione, Principal sbuglione@communitybuild.net

Community Healthlink, Inc.

Youth & Family services offers counseling for youngsters and parents, as well as family therapy. Previously known as the Worcester Youth Guidance Center

275 Belmont Street, Worcester, MA 01605

Contact: Keesha LaTulippe 508-799-0702

<http://www.communityhealthlink.org/htmlpages/youth%20family%20service.html>

Continuum of Care

Community Healthlink

Friendly House

Genesis Club

HMIS

Massachusetts Veterans, Inc

Montachusett Veterans Opportunity Center

Mobile Medical Unit

Montachusett Opportunity Council

North Central Human Services

Our Father's House

PIP Aurora

Safe Havens

The Bridge

Worcester Housing Authority

YOU, Inc

CultureLEAP (Learning through Education & Arts Partnerships) formerly WAHEC (Worcester Arts and Humanities Educational Collaborative) is a coalition of cultural institutions, funding partners, and the Worcester Public Schools (WPS) that links students and teachers with the extensive cultural resources of Worcester County.

Contact: Kristin Bafaro 508-735-9567 <http://cultureleap.worcesterschools.org>



Latino Education Institute

Educational services for Latino students and their families

Located at Worcester State University, 537 Chandler Street, Worcester, MA 01602

Contact: Mary Jo Marion -508-798-6507 <http://www.worcester.edu/LEI>

MASS 2-11 Dial 2-1-1 or 877-211-6277 - A program of the United Way of Central MA

Online access to statewide community resources for emergency food, rent, help paying your heating and utility bills, mental health counseling, health programs, public health and safety services, child care referrals, job resources, and other help for individuals, parents and families.

<http://www.unitedwaycm.org/>

Massachusetts Parent Information Resource Center (Mass PIRC) is a statewide organization helping families across Massachusetts learn about their rights and how to take an active, effective role in their children's education. Mass PIRC also works with schools and districts to help design ways for schools to become places where families are welcomed and their involvement encouraged. Please visit our resource-rich Web site, in English, Spanish and Portuguese at www.masspirc.org. Our Tri-lingual (English, Spanish, and Portuguese) toll-free info line is 1-877-471-0980.

Parent/Professional Advocacy League, Worcester Chapter

PAL Massachusetts Chapter, for Family's Mental Health Needs is the only statewide family organization with a network of over 4,000 families working to change the Children's Mental Health System in Ma. We offer information, resources and referral to family's who have children with Behavioral, Emotional or Mental Health Needs - www.ppal.net

Contact: Meri Viano, PAL Statewide Regional Manager, 508-767-9725 ext. 206, mviano@ppal.net

Mary Lambert, PAL Lead Family Support Spec., 508-767-9725 ext 201, mlambert@ppal.net

Parental Stress Line - 1-800-632-8188. Calls are anonymous and confidential.

A 24 hour helpline for parents who want to talk about challenges they are having with their Children.

<http://www.parentshelpingparents.org/parentalstresslinec/parental-stress-line.html>

Southeast Asian Coalition of Central Mass

Educational and multi-service center for Asian families

20 Chandler Street, Worcester, MA 01609

Contact: Thuha Le (508) 791-4373 <http://www.seacma.org/>

Special Education Parent Advisory Council

Meetings are held the 2nd Wednesday of each month from October – May during the academic year from 6:30 - 8:30 pm at: Worcester Technical High School, 1 Skyline Drive in the Faculty Dining Room. Website: www.worcesterspedpac.org

Stand for Children

Stand for Children is an innovative education advocacy organization that brings parents, educators, and community members together to use the power of grassroots tactics to work with elected officials and school administrators to ensure all children get the excellent public education they need to thrive. Our members are focused on securing adequate funding for public schools and reforming education policies on a state and city wide level.

Contact: Jabián Gutiérrez, Central and Western MA Director at (508) 831-8797,

Katie Elmes, Worcester Organizer at (508) 685-2792

Website: www.stand.org/ma



Title I Parent Advisory Council

Contact: **Barbara Sargent** at 508-799-3655

Worcester Educational Development Foundation, Inc. (WEDF) was founded in 2005 for the sole purpose of supporting students and teachers in the Worcester Public Schools.

Contact: wedf@worc.k12.ma.us or 508-799-3018 or <http://wedf.worcesterschools.org>

Worcester Community Action Council

For All Worcester Services - Parents Pocket Size Guide – Programs related to:

Mental Health Providers, Housing Search, Support Group Programs and many more Community Agencies.

Contact: Ann Bureau - 508-754-1176 x126 Website: <http://www.wcac.net/contact.html>

Worcester Community Connections at Worcester Community Action Council

Parent-to-Parent support and help for families with everyday educational needs

484 Main Street, 2nd

Contact: **Ann Bureau** - 508-754-1176 x126 floor <http://www.wcac.net/contact.html>

Worcester Community Partnership

The WCP is a MA Department of early Education and Care grant to provide support services to families with children ages birth to school age and their families. Opportunities include Playgroups, Gym time, Family Recreational Activities, Support for families and many other programs.

130 Leeds Street, Old Greendale School, Worcester

Contact: **Beth Vietze** (508) 799-3136 www.wfcp.worcesterschools.org

Worcester Education Collaborative

An independent advocacy organization working to ensure that students in the Worcester Public Schools are given the opportunity to succeed at the highest possible level: to both acquire skills and knowledge to master the challenges of the 21st century and to help develop a wide variety of partnerships among families, schools, organizations, and businesses that will enhance quality public education.

484 Main Street, Suite 300, Worcester, Ma 01608

Contact: **Dr. Jennifer Davis Carey**, Executive Director - 508-757-5631 ext. 256

www.wecollaborative.org

After School Programs

Many schools hold After School/Summer Programs, and/or Homework Centers at their sites in collaboration with community organizations. Inquire with your child's school regarding a list of the programs. **Please Note:** Due to funding restrictions, only children currently attending identified schools are able to attend the after school programs.

Providers of After School Programs:

ACE Community – an organization that was established to address educational problems that African Children address now that they are here in the Worcester Public Schools. It strives to help recent immigrant and or refugee kids succeed in school. The center is open daily M- F for Drop in Tutoring from 3 – 6pm and on Saturdays there is program that goes from 9:25 am to 3:45pm to which the students need to be evaluated before enrolling.



Please contact: Julia Kilgore or Kaska Yawo
23 N. Ashland Street , Worcester, MA 01609
Phone: 508-799-3564
<http://www.acechildren.org/>

Central Branch YMCA - Programs include Aquatics, Health & Wellness, Sports, Recreation, Youth Teens, Early Childhood, Camps
766 Main Street, Worcester, MA 01608,
Phone: 508-755-6101
<http://www.ymcaworcester.org>

Girls, Inc. - Programs include aquatics, Teen Program, Leadership Development, Girls Basketball
Contact: Dean Theadore, Director
125 Providence, Worcester, MA 01604
Phone: 508-755-6455
<http://www.girlsincworcester.org>

Guild of St. Agnes
Child Care, Careers, Volunteer, Resources
405 Grove Street Worcester, MA 01605
Phone: 508-755-2238
<http://www.guildofstagnes.org>

Friendly House - Programs include Youth Hoop Basketball
36 Wall Street, Worcester, MA 01604
Phone: 508-755-4362

Rainbow Development Center
Non-profit childcare agency · education · family services
10 Edward Street Worcester, MA 01608
Contact - Tel: 508-791-6849
<http://www.rainbow@rainbowcdc.com>

YWCA - Programs include karate lessons, dance lessons, and a tumble class
1 Salem Square, Worcester, MA 01608,
Phone: 508-767-2505
<http://www.ywcacentralmass.org>

Homework Helps:

Big Y Homework Hotline: 1-800-866-BIG-Y (2449) Monday - Thursday 4pm - 7pm, during school year;
Children from grades K-12 can call and ask any questions. Teachers will help with assignments.



Worcester Public Schools Calendar 2011 – 2012

AUGUST						
S	M	T	W	T	F	S
	1	2	3	4	5	6
7	8	9	10	11	12	13
14	15	16	17	18	19	20
21	22	23	24	25	26	27
28	29	30	31			

SEPTEMBER						
S	M	T	W	T	F	S
				1	2	3
4	5	6	7	8	9	10
11	12	13	14	15	16	17
18	19	20	21	22	23	24
25	26	27	28	29	30	

OCTOBER						
S	M	T	W	T	F	S
						1
2	3	4	5	6	7	8
9	10	11	12	13	14	15
16	17	18	19	20	21	22
23	24	25	26	27	28	29
30	31					

NOVEMBER						
S	M	T	W	T	F	S
		1	2	3	4	5
6	7	8	9	10	11	12
13	14	15	16	17	18	19
20	21	22	23	24	25	26
27	28	29	30			

DECEMBER						
S	M	T	W	T	F	S
				1	2	3
4	5	6	7	8	9	10
11	12	13	14	15	16	17
18	19	20	21	22	23	24
25	26	27	28	29	30	31

JANUARY						
S	M	T	W	T	F	S
1	2	3	4	5	6	7
8	9	10	11	12	13	14
15	16	17	18	19	20	21
22	23	24	25	26	27	28
29	30	31				

FEBRUARY						
S	M	T	W	T	F	S
			1	2	3	4
5	6	7	8	9	10	11
12	13	14	15	16	17	18
19	20	21	22	23	24	25
26	27	28	29			

MARCH						
S	M	T	W	T	F	S
				1	2	3
4	5	6	7	8	9	10
11	12	13	14	15	16	17
18	19	20	21	22	23	24
25	26	27	28	29	30	31

APRIL						
S	M	T	W	T	F	S
1	2	3	4	5	6	7
8	9	10	11	12	13	14
15	16	17	18	19	20	21
22	23	24	25	26	27	28
29	30					

○ Wednesday, August 31, 2011: First day of school for students.
 Thursday, June 14, 2012*

Last day of school. Last day of school for seniors: May 25, 2012.

*This date may change in response to the number of snow days used during the school year.

End of marking quarters:

1. November 4, 2011
2. January 20, 2012
3. April 5, 2012
4. June 14, 2012 or last day

□ = DAYS WHEN SCHOOL IS NOT IN SESSION FOR STUDENTS

MAY						
S	M	T	W	T	F	S
		1	2	3	4	5
6	7	8	9	10	11	12
13	14	15	16	17	18	19
20	21	22	23	24	25	26
27	28	29	30	31		

JUNE						
S	M	T	W	T	F	S
					1	2
3	4	5	6	7	8	9
10	11	12	13	14	15	16
17	18	19	20	21	22	23
24	25	26	27	28	29	30

JULY						
S	M	T	W	T	F	S
1	2	3	4	5	6	7
8	9	10	11	12	13	14
15	16	17	18	19	20	21
22	23	24	25	26	27	28
29	30	31				

2011	2012
August 29 – Teacher/Staff Reporting Day	January 2 – Non-School Day
August 30 – Staff Development	January 16 – Martin Luther King
August 31 – First Day of School	February 20 – Presidents' Day
September 5 – Labor Day	February 21-24 – Winter Vacation
October 7 – Staff Development	April 6 – Non-School Day
October 10 -Columbus Day	April 16 – Patriots' Day
November 11 – Veterans' Day	April 17-20 – Spring Vacation
November 23-25– Thanksgiving	May 28 – Memorial Day
December 23-30 – Holiday Vacation	June 14 – Last Day of School

Special Thank You to Worcester Public School Members and Community Collaborators who assisted in updating this guide

Sara Arroyo-O'Brien - English Language Learners Department

Karen Norton - WPS Webmaster Worcester Public Schools

Mark T. Berthiaume - Community and School Support

Dr. Sergio M. Páez - Manager of Supplemental Support Services & English Language Learners - Worcester Public Schools

Audberto Benavides - WPS Web Intern

Anne Bureau - Worcester Community Connections of the Worcester Community Action

Barbara Sargent - Director of Supplemental Academic Programs and Services

Beth Vietze - Director of Family Community Partnership

Dawn Johnson - Citywide Parent Planning Advisory Council

Donna Foley - Head Start Programs

Janet Matthews - AVID Advancement Via Individual Determination

Jennifer Davis-Carey - Worcester Educational Collaborative

John Trainor - Fanning Adult Learning Center

Judy Thompson - Coordinator of Counseling, Psychology/Community Outreach Services

Julie Lesure - Community Liaison, District Attorney Joseph Conte's Office

Joseph Corazzini - Worcester Educational Collaborative

Lee Soto - PIRC - Parent Information Resource Center - Massachusetts

Michelle Feliciano - Parent Liaison Worcester Public Schools at Parent Information Ctr

Paula Harrity - School Volunteers Parents Getting Involved

Rosemarie Franchie - Director of Worcester Child Development Head Start Program,

Sharon Leary - AVID Advancement Via Individual Determination

